



CORPORATE OFFICE

51 S. 2nd Street, Hamilton, IL 62341
Ph. 217-847-3324 Toll Free 1-888-922-1293

Chico, CA Branch
530-893-0921
1-877-332-3268

Sioux City, IA Branch
712-255-3232
1-877-732-3268

Albion, MI Branch
517-629-2860
1-877-932-3268

Williamsport, PA Branch
570-980-9831
1-877-532-3268

High Springs, FL Branch
386-454-0237
1-877-832-3268

Fresno, CA Branch
559-495-0230
1-877-432-3268

Paris, TX Branch
903-784-6145
1-877-632-3268

Watertown, WI Branch
920-261-5363
1-877-232-3268

Chatham, VA Branch
434-432-8461
1-800-220-8325

Frankfort, KY Branch
502-848-0000
1-888-932-3268

DADANT M00407 4-FRAME HAND EXTRACTOR

*The Dadant newly re-designed 4-frame hand extractor now has
an integral leg system and new wire-formed basket*



The extractor comes assembled except for mounting the hand crank unit and attaching the legs to the brackets.

Dimensions: 18" diameter, 40" overall height from floor to top of tank, 16" height to bottom of gate

All stainless steel, aluminum and nylon construction – no paint to chip and peel – no plating to peel with age

Loading Capacity – Four standard 9-1/8" deep or shallow frames per load

Nylon Gears – Strong and durable nylon gears provide quiet operation. No oiling required. Inexpensive and easy replacement if ever necessary.

Stainless Steel Construction – Satin finish Type 304 high quality food grade, easy cleaning, 24 gauge (.0235" thick) stainless steel provides years of service while maintaining excellent appearance with no rust, chipping, or flaking.

Removable Internal Components – Turn this extractor into a 300 lb. storage tank by removing three wing nuts and lifting out the hand assembly, basket, and bottom basket support. It's a great way to bottle honey without extra equipment. (M00534, 18" storage tank cover and M00495, 18" strainer screen available separately)

Disengaging Handle – For safety, the handle only engages in one direction of rotation. The handle can be held while the extracting basket continues to turn. Eliminates the danger of a directly fastened handle yet gives positive engagement.

Easy-to-assemble legs – simply attach with supplied bolts to leg brackets already in place on the extractor tank. This allows space for a 5-gallon pail to be placed under the honey gate.

Stainless steel wire basket – provides large open area for honey to flow freely from combs in entirely food-approved surroundings.



Disengaging Handle



Easy-to-assemble legs



Stainless steel wire basket



Stainless steel wire basket with frames

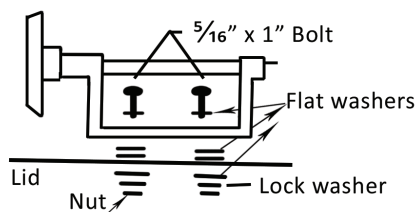
ASSEMBLY

1. Leg Attachment

- Remove legs and bolts from package.
- Lay tank on side on a soft surface (such as a towel) to prevent damage to the tank.
- Begin with inserting one leg into a bracket at a time and start both bolts in through the leg bracket and leg. Once the bolts are in place, tighten. Continue until all three legs are in place and set tank upright.

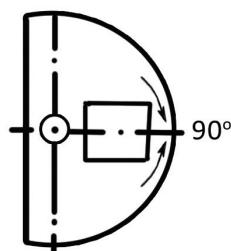
2. Crank Assembly Attachment

- Open the lid of the extractor and remove all packing holding the reel.
- Remove and inspect hand assembly and bolt package.
- Place the hand assembly on the stationary lid and start bolts as shown in diagram. Do not tighten at this time.



NOTE: It is important that the flat washers be installed between the stationary lid and the aluminum casting.

- Being sure that the gear teeth are in mesh, push gently on the aluminum casting to obtain good gear tooth contact. Snug the bolts, but **do not tighten**.
- Look at the point where the gear teeth mesh and if necessary, gently tap the back of the aluminum casting to the right or left to obtain good gear alignment. Note: The centerline of the casting needs to be perpendicular (90°) to the centerline of the small pinion gear as seen in the diagram.



- f. Install wood handle by threading the bolt of the handle into the aluminum handle casting. Tighten the locknut against the aluminum. Wood handle should turn freely on the bolt.
- g. Try your extractor checking for smoothness of operation. Step “e” may have to be repeated.
- h. Install the gear guard by placing one flat washer on each 1/4” x 1/2” bolt and inserting the bolt through the gear guard and lid corresponding holes. On the underside of the lid, place one flat washer and one lock washer and nut on each bolt. Tighten.

NOTE: Securely anchor extractor using holes provided in leg feet.

OPERATION

Place frames with cappings removed into the basket. Frames should be placed in the basket with the top bar to your right and in a vertical position as shown in the photo. One end bar will rest on the bottom of the basket with the end protruding through the basket bottom cutout. The other end bar will be “up”. The frame is then leaned against the top of the basket.

Turn crank slowly at first and gradually increase speed until one side of the frame is extracted; then reverse the frame and repeat the same operation.

When extracting combs that are new, or have not had two or more years use, extract part of the honey out of the first side, reverse the frame and extract all the honey from the second side, and finally, turn the frame back to the first side and finish extracting. The older the combs, the tougher they become.

Remember to keep the gate open with honey flowing out of the extractor while you are extracting so that you do not cause undo stress on the frames or the motor as the honey would build up in the extractor. You can shut the gate while you are changing pails or when the motor is turned off.

MAINTENANCE

After use, thoroughly clean the extractor with soap and hot water, rinse completely with hot water, and dry for storage until next use.

REPLACEMENT PARTS

		03-40126	5/8” Grip Ring (2)
04-39005	Pinion gear w/shaft	04-40002	Tank Lid, Movable w/hinge
04-39029	Gear Guard	04-40330	Tank Lid, Stationary
04-39607	Crankshaft	03-50076	5/8” bearing
04-40702	Complete Basket	03-50164	Replacement O-ring for Gate
04-40703	Tank	03-50300	Wood handle
04-40606	Leg Set	03-50304	3/8” Nylon Bushing
04-39621	Bottom Basket Support	03-50308	Nylon Bevel Gear
04-40094	3/8” SS Grip Ring	03-50665	Plastic Gate (M00579)
04-40096	3/8” SS Flat Washer	03-50346	Crankshaft Housing Casting
04-40601	1/4” L-bolt assembly	03-50347	Crank Handle Casting & 5-072 Bearing