



## CORPORATE OFFICE

51 S. 2nd Street, Hamilton, IL 62341  
Ph. 217-847-3324 Toll Free 1-888-922-1293

**Chico, CA Branch**

530-893-0921  
1-877-332-3268

**Fresno, CA Branch**

559-495-0230  
1-877-432-3268

**Sioux City, IA Branch**

712-255-3232  
1-877-732-3268

**Paris, TX Branch**

903-784-6145  
1-877-632-3268

**Albion, MI Branch**

517-629-2860  
1-877-932-3268

**Watertown, WI Branch**

920-261-5363  
1-877-232-3268

**Williamsport, PA Branch**

570-980-9831  
1-877-532-3268

**Chatham, VA Branch**

434-432-8461  
1-800-220-8325

**High Springs, FL Branch**

386-454-0237  
1-877-832-3268

**Frankfort, KY Branch**

502-848-0000  
1-888-932-3268

# DADANT M00409 6-FRAME HAND EXTRACTOR

*The Dadant newly re-designed 6-frame hand extractor now has  
an integral leg system and newly designed reel*

***Easy to assemble.***

*Dimensions:* 18" diameter, 40" high floor to top of tank, 16" floor to bottom of gate

*All stainless steel, aluminum and nylon construction – no paint to chip and peel – no plating to peel with age*

*Stainless steel tank all welded*

*Loading capacity – Six 6-1/4" or shallower frames radially each load with positive frame placement*

*Stainless steel fabricated reel*

*Easy-to-assemble legs – simply attach with supplied bolts to leg brackets already in place on the extractor tank. This allows space for a 5-gallon pail to be placed under the honey gate.*

*Stainless Steel Construction – Satin finish Type 304 high quality food grade, easy cleaning, 24 gauge (.0235" thick) stainless steel provides years of service while maintaining excellent appearance with no rust, chipping, or flaking.*

*Removable Internal Components – Turn this extractor into a 300 lb. storage tank by removing three wing nuts and lifting out the hand assembly, basket, and bottom basket support. It's a great way to bottle honey without extra equipment. (M00534, 18" storage tank cover and M00495, 18" strainer screen available separately)*

*Disengaging Handle – For safety, the handle only engages in one direction of rotation. The handle can be held while the extracting basket continues to turn. Eliminates the danger of a directly fastened handle yet gives positive engagement.*

*Laser cut reel with spot welded reel clips for positive placement.*

Radial extractors are the quickest, easiest, and most efficient way to extract honey from the comb. Uncapped combs are placed in the circular reel like spokes of a wheel with the frame top bars toward the outside of the reel. The reel spins, creating a centrifugal force. Because of the natural slant of the honeycomb cells, honey is thrown from both sides of the comb at once. No further handling of the frames is needed from starting to unloading time, freeing the operator for other work such as uncapping combs for the next load. With radial extractors, the outward pressure is against the top bar, not against the comb surface as in small, non-radial models, eliminating much of the breakage of the combs.

## ASSEMBLY

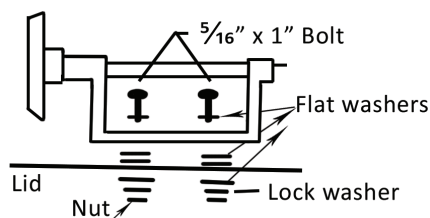
### 1. Leg Attachment

- Remove legs and bolts from package.
- Lay tank on side on a soft surface (such as a towel) to prevent damage to the tank.
- Begin with inserting one leg into a bracket at a time and start both bolts in through the leg bracket and leg. Once the bolts are in place, tighten. Continue until all three legs are in place and set tank upright.

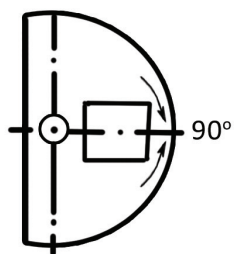
### 2. Crank Assembly Attachment

- Open the lid of the extractor and remove all packing holding the reel.
- Remove and inspect hand assembly and bolt package.
- Place the hand assembly on the stationary lid and start bolts as shown in diagram. *Do not tighten at this time.*

**Note:** It is important that the flat washers be installed between the stationary lid and the aluminum casting.



- Being sure that the gear teeth are in mesh, push gently on the aluminum casting to obtain good gear tooth contact. Snug the bolts, but **do not tighten**.
- Look at the point where the gear teeth mesh and if necessary, gently tap the back of the aluminum casting to the right or left to obtain good gear alignment. Note: The centerline of the casting needs to be perpendicular (90°) to the centerline of the small pinion gear as seen in the diagram.



- Install wood handle by threading the bolt of the handle into the aluminum handle casting. Tighten the locknut against the aluminum. Wood handle should turn freely on the bolt.



Easy-to-assemble legs



Disengaging Handle



Laser cut reel



Laser cut reel with frame

- g. Try your extractor checking for smoothness of operation. Step “e” may have to be repeated.
- h. Install the gear guard by placing one flat washer on each 1/4” x 1/2” bolt and inserting the bolt through the gear guard and lid corresponding holes. On the underside of the lid, place one flat washer and one lock washer and nut on each bolt. Tighten.

## OPERATION

1. Frames of honey should have the cappings cut off both sides.
2. Place 6-1/4” or smaller frames in reel frame clips. Top bar of frame should rest against outer ring of reel with bottom bar toward the center shaft.
3. After loading is complete, close lid and begin cranking the hand crank assembly. Begin slow and increase speed gradually.

**Note:** First year combs may require slower initial turning with gradual increases in speed. If you break combs, slow down and increase speed gradually.

Remember to keep the gate open with honey flowing out of the extractor while you are extracting so that you do not cause undo stress on the frames as the honey would build up in the extractor. You can shut the gate while you are changing pails or when the motor is turned off.

## MAINTENANCE

After use, thoroughly clean the extractor with soap and hot water, rinse completely with hot water, and dry for storage until next use.

### REPLACEMENT PARTS

04-39607	Crankshaft
04-39618	Replacement Tank - See 04-40703
04-40001	Stationary Lid
04-40002	Movable Lid
04-40003	Gear Guard
04-40004	Reel Shaft
04-40005	Bottom Reel Support
04-40901	Reel (shaft sold separately)
04-40601	1/4” L-Bolt assembly
03-40126	5/8” Grip Ring
03-50087	Bearing w/Snap Ring
03-50164	Replacement O-ring for plastic gate (2 required)
03-50300	Wood Handle Assembly
03-50306	Nylon Bushing
03-50307	Plastic Pinion Gear
03-50308	Plastic Bevel Gear
03-50665	Plastic Gate (M00579)
03-50346	Crankshaft Housing Casting
03-50347	Crankhandle Casting & 5-072 Bearing
04-40703	Replacement Tank (legs sold separately)
04-40606	Leg Set
04-40006	Radial Reel - See 04-40901
03-39030	L-Bracket / Set of 2